

State of Wyoming Corner Record

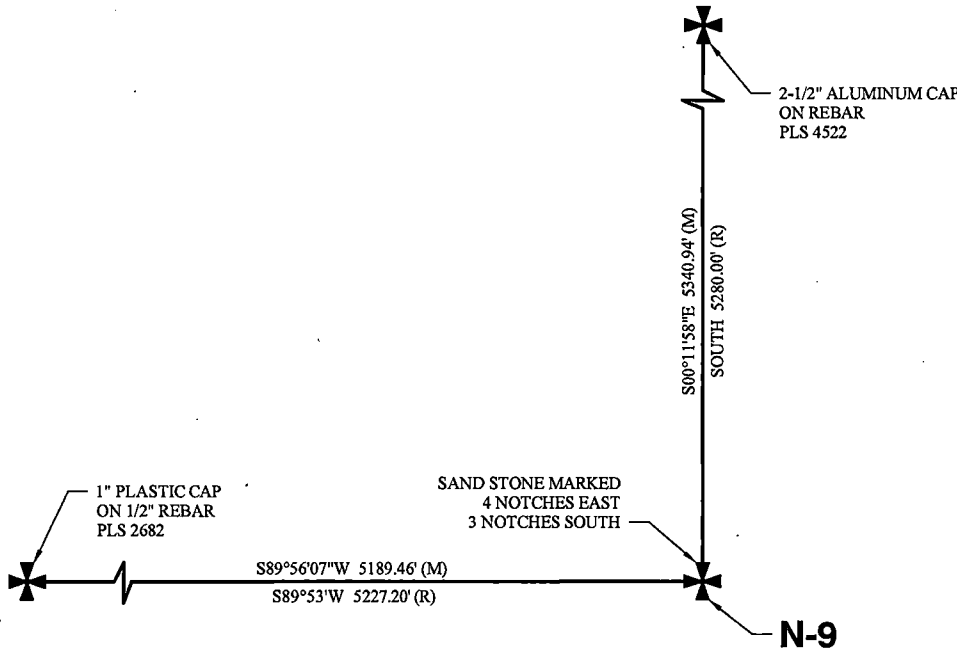
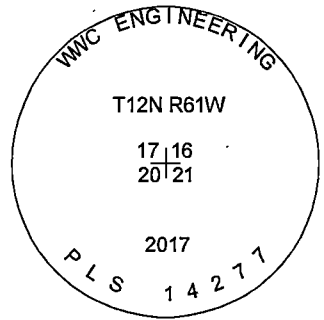
(In compliance with the CORNER PERPETUATION AND FILING ACT, Wyoming Statutes, 1997, Section 33-29-140, et seq., and the Rules and Regulations of the Board of Registration for Professional Engineers and Professional Land Surveyors)

Reverse side of this form may be used if more space is needed.

Record of original survey and citation of source of historical information (if corner is lost or obliterated.) Description of corner monumentation evidence found and/or monument and accessories established to perpetuate the location of this corner. Sketch of relative location of monument, accessories, and reference points with course and distance to adjacent corner(s) (if determined in this survey). Method and rationale for reestablishment of lost or obliterated corner.

EVIDENCE RECORD: 1874 GLO Survey: South on a true line between sections 16 & 17, 80.00 chains. Set sand stone 15"x11"x4" marked 4 notches east edge and 3 notches south edge for corner to sections 16, 17, 20 and 21.

EVIDENCE FOUND: June 2017: Found a sand stone 16"x8"x2", well marked laying north-south 3" below ground surface amongst scattered stones. Accepted position of marked stone for corner of sections 16, 17, 20 and 21. Reset marked stone at accepted position with 4 notches facing east and 3 notches facing south 12" below ground surface with collar of stone. Set a 2 1/2" aluminum cap marked as shown on a 5/8" rebar, 30" long, 4" above ground along west side of stone.



LEGEND

✦ FOUND SECTION CORNER AS NOTED
 (R) RECORD (1874 GLO SURVEY)

BASIS OF BEARING:
 BEARINGS AND DISTANCES ARE BASED ON A WYOMING STATE PLANE COORDINATE SYSTEM, NAD 1983, EAST ZONE, GROUND DISTANCES

N.T.S.

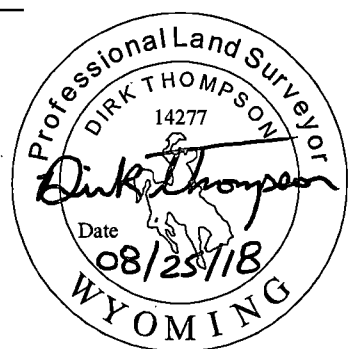
Date of Field Work: June 07, 2017 Office Reference: 2017-135

CROSS INDEX DIAGRAM

1	2	3	4	5	6	7	8	9	10	11	12	13	14	15	16	17	18	19	20	21	22	23	24	25	
A																									A
B																									B
C		6																							C
D																									D
E																									E
F																									F
G																									G
H																									H
J																									J
K																									K
L																									L
M																									M
N																									N
O																									O
P																									P
Q																									Q
R																									R
S																									S
T																									T
U																									U
V																									V
W																									W
X																									X
Y																									Y
Z																									Z

Land Surveyor / Firm / Address
Dirk Thompson
WWC Engineering
1849 Terra Avenue
Sheridan, WY 82801
 Telephone: (307) 672-0761

This corner record was prepared by me or under my direction and supervision.
 SEAL & SIGNATURE



RECP #: 739880
 RECORDED 10/1/2018 AT 1:32 PM BK# 2598 PG# 314
 Debra K. Lee, CLERK OF LARAMIE COUNTY, WY PAGE 1 OF 1

Corner Name: Northeast Corner Section: 20 T 12N R 61W ; 6TH P.M. Cross-Index No.: N-9
 SBRPEPLS/PLSW: March 1994; PLSW January 1998